

Kent Brass Tactile Warning Stud



**KENT BRASS TACTILE WARNING MULTI GROOVE STUD (KBTWS/25/5/FDG)****Kent**
STAINLESS

Kent Tactile Warning Studs (Flat Domed & Multi Grooved KTWS/35/5/FDMG; w-12 Brass Alloy;

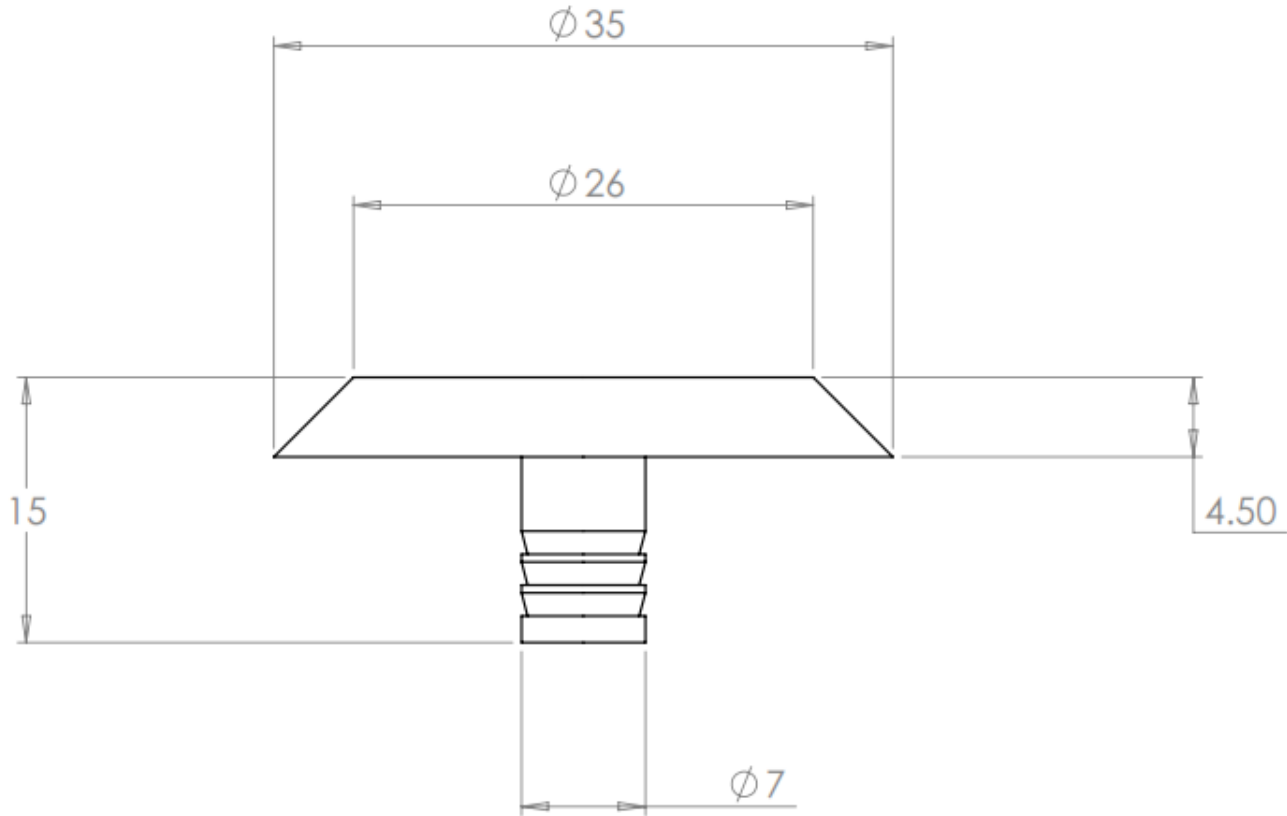
The Kent Tactile Warning Studs provide an underfoot warning to identify hazards and dangerous areas where there is a change in levels or where there is an unprotected opening such as open stairwells and platforms.

The stainless steel material is ideal for high-traffic pedestrian areas. The slip resistant design ensures the studs do not themselves become a hazard in wet or cold conditions.

Features:

- Underfoot warning to identify hazards and dangerous areas
- W-12 Brass Alloy
- Easy Installation
- Can be incorporated onto the full range of Kent Stainless seats and benches
- Slip resistant design



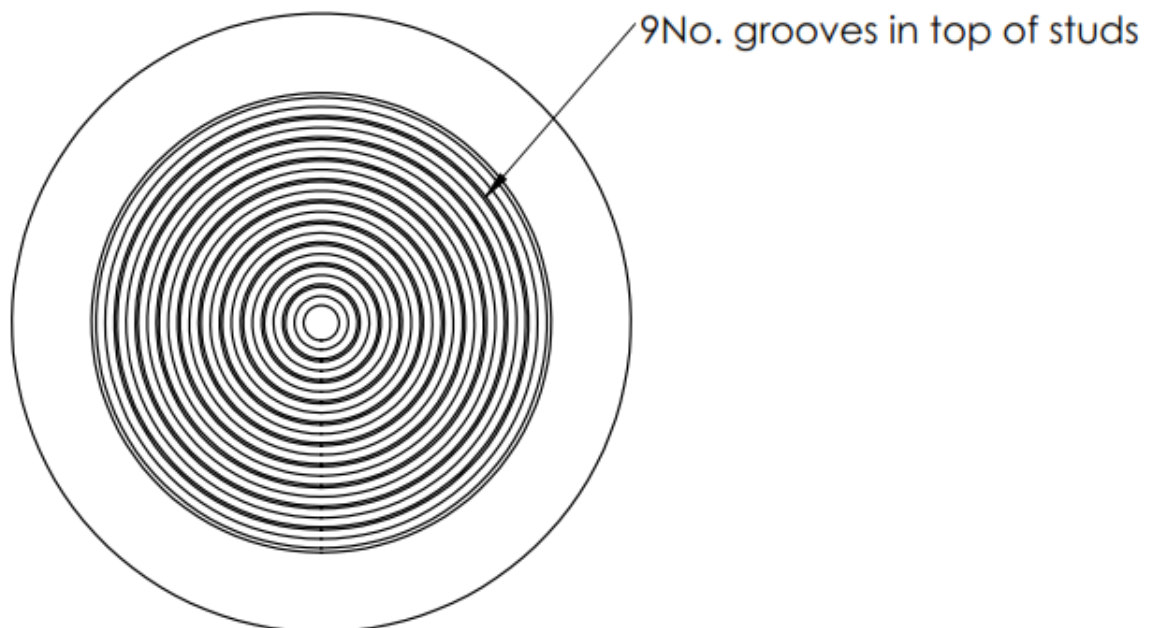
KENT BRASS TACTILE WARNING MULTI GROOVE STUD (KBTWS/25/5/FDG)

Product Code
Height
Diameter
Rings

Kent Tactile Warning Stud KTWS/35/5/FDMG

15mm

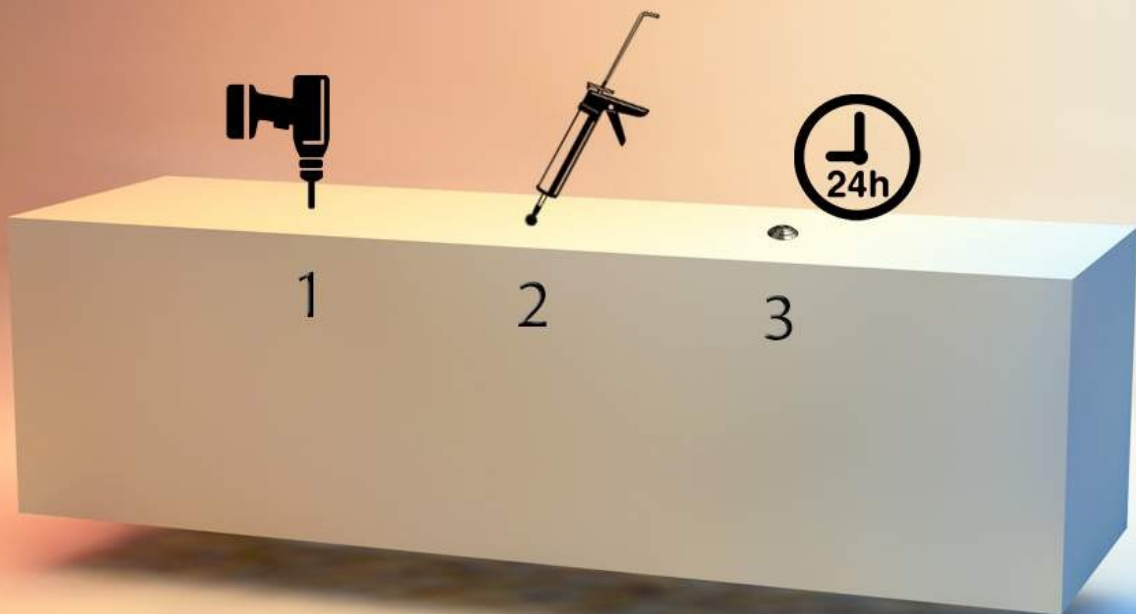
35mm

7



Installation of Studs

1. Drill a 15mm diameter hole by 30mm deep
2. Fill with chemical mortar (Kent Stainless recommend Mungo MIT-SE Plus)
3. Insert the stud and leave to set for 24 hours.



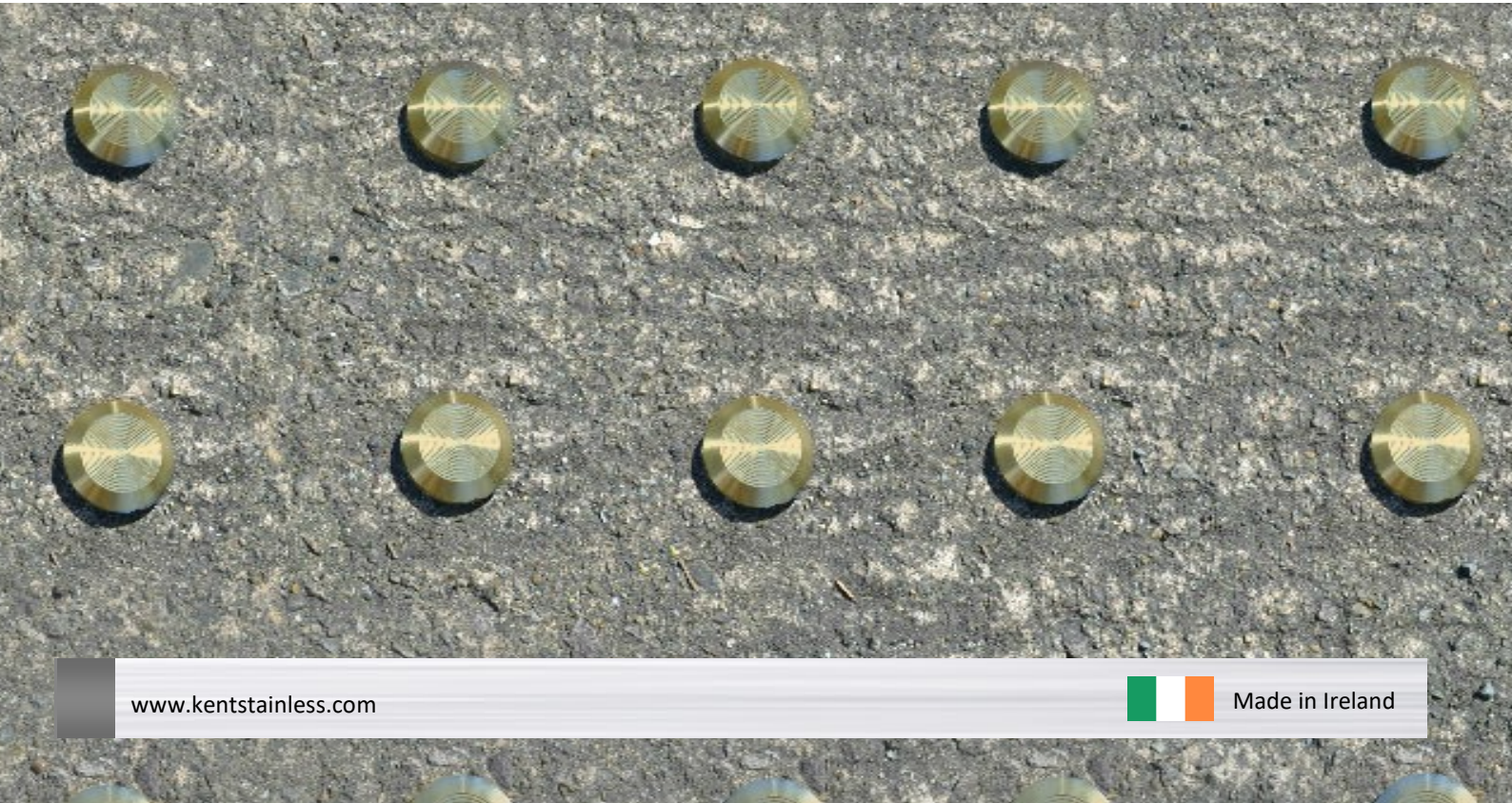
Maintenance of Brass

Solid brass can stand up to tougher restoration techniques and will benefit from a good polish. All you need to do is give the solid brass a simple wash with soapy water, let it dry, and apply the polish. Most conventional polishes such as Brass or Twinkle will coat the raw metal with a thin film of oil to help inhibit future tarnishing. Additionally, most metal polishes contain solvents and detergents to remove the tarnish, mild abrasives to polish the metal, and oils to act as a barrier between the raw metal and air.

Only a trace amount should be applied, creating a thin film. To do this, an adequate amount of metal polish should be applied and spread out on an absorbent rag. Let the rag dry out for a minimum of 24 hours before applying. Apply this trace amount of polish with the grain of the brass with one hand while buffing it out in a rapid motion (creating friction) with the other hand. This burnishing action will harden the polish, like "spit shining" a shoe, and create a surface far more difficult to smudge or discolour.

Assuming that you have polished raw or solid brass properly, you may want to lacquer it at this point as an added method of protection. Or if you don't want to use lacquer, olive oil is a good compromise. Brass will look brighter and require less polishing if rubbed with a cloth moistened with olive oil after each polishing. The oil naturally retards tarnish.

Don't overdo it with the polish. Many people overuse and flood metal surfaces with polishes believing that they are better protecting the surface. It's important to use the proper procedure when polishing your brass. too much polish may discolour the surface. Brass can sometimes turn "black" when cleaning due to overuse or misuse of polish.





Specify

Customise your diameter,

*Or go with our standard
35mm diameter*

Specify:

Kent Brass Tactile Warning Studs Multi Groove KTWS/25/5/FDG(2); 35mm diameter; 7 rings; W-12 Brass Alloy;

Choose your steel:

W-12 Brass Alloy

OR

Grade 304 Stainless steel

Grade 316 Stainless steel

Rings
Choose from
2 rings
3 rings
7 rings

Options

2 Rings

3 Rings

7 Rings

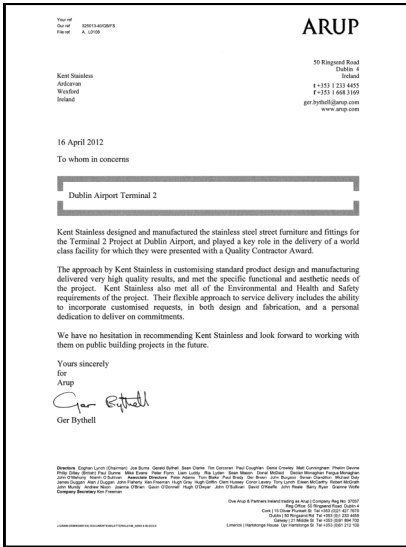
W-12 Brass Alloy

Grade 304 Stainless Steel

Grade 316 Stainless Steel



Testimonials



“We have no hesitation in recommending Kent Stainless and look forward to working with them on public building projects in the future”

- ARUP



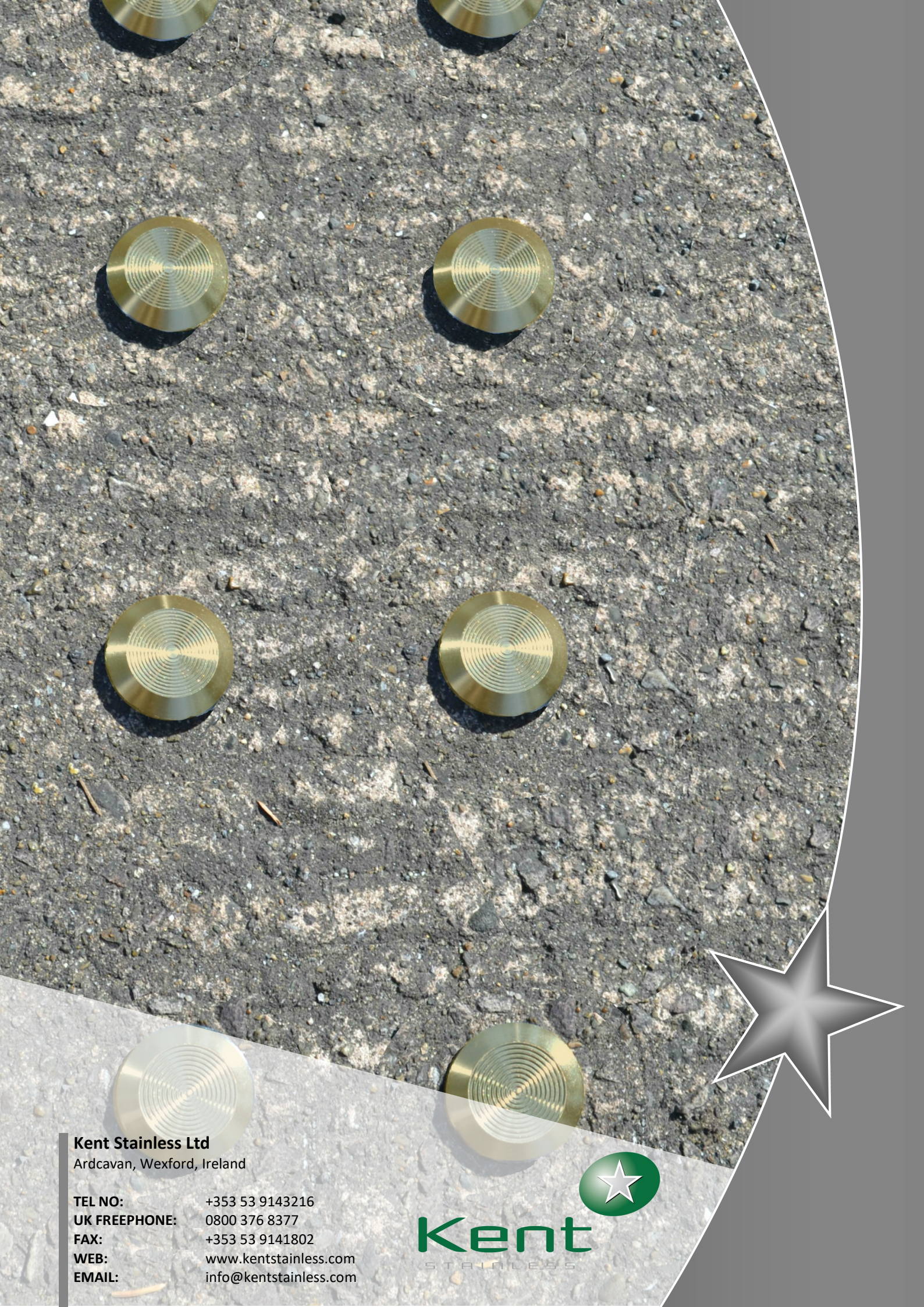
“ Kent Stainless scored highly in all regards again”

- BAM



“ Your timely delivery and seamless integration with main contractor Skanska made the overall project a huge success ”

- Forward Swindon



Kent Stainless Ltd

Ardcavan, Wexford, Ireland

TEL NO: +353 53 9143216

UK FREEPHONE: 0800 376 8377

FAX: +353 53 9141802

WEB: www.kentstainless.com

EMAIL: info@kentstainless.com

