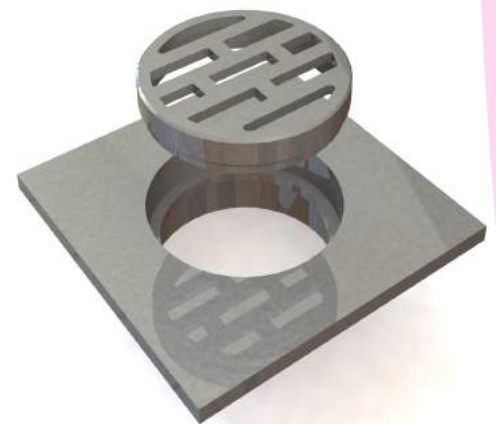
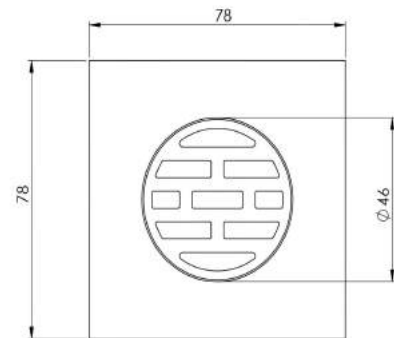
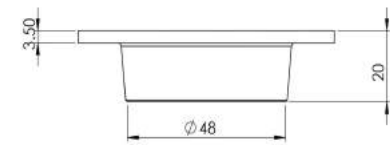


## KENT KSD78/48 – Shower Drain

The Kent Stainless 2 Part shower drain has been developed specifically for the Middle East residential market. It is ideal for use in apartment complexes, villa compounds, ablution and public washroom areas. The shower drains are manufactured in **grade 316 stainless steel** with a satin finish as standard, with a mirror polished finish also available. The shower drains have a 48mm diameter outlet as standard.

### Features

- Grade 316 Stainless steel
- 48mm diameter outlet
- Satin finish as standard; mirror polish also available
- Ex stock; spare parts also ex stock



Product Code	Height	Width	Depth	Outlet	Flow Rate*
KSD 78/48	20mm	78mm	78mm	48mm	0.71l/s

Specify Kent Shower Drain KSD78/48. 78mmx78mm, 2 part shower drain. Grade 316 stainless steel with a satin polish finish.



BS EN1253 Class K3