

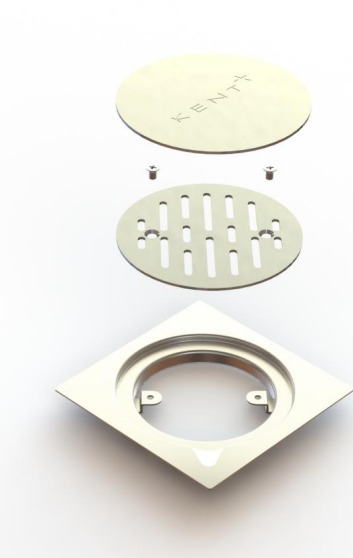
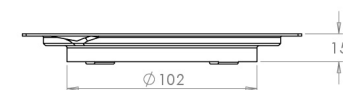
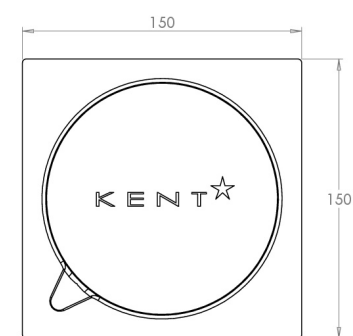
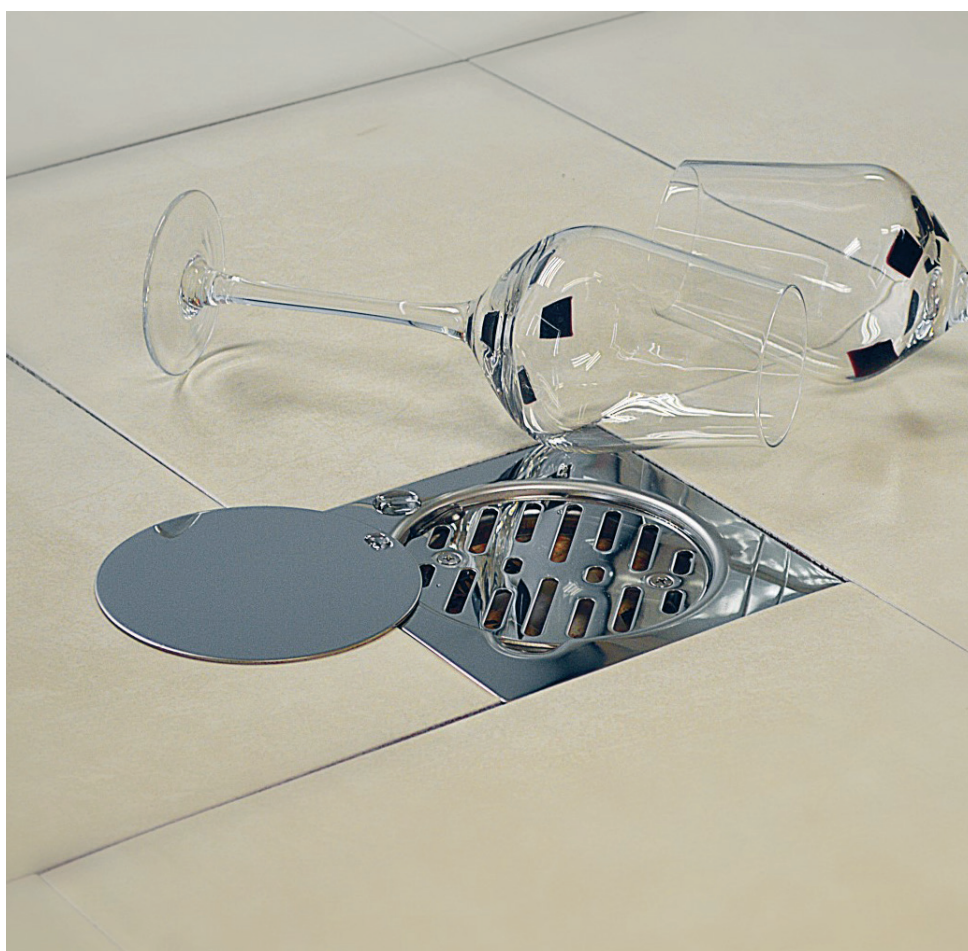
KENT KFD150/102 – Floor Drain

The Kent Stainless 3 Part floor drain has been developed specifically for the Middle East residential market. It is ideal for use in apartment complexes, villa compounds, ablution and public washroom areas. The floor drains are manufactured in **grade 316 stainless steel** with a satin finish as standard, with a mirror polished finish also available. The floor drains have a 102mm diameter outlet as standard. 150mm and 200mm versions are available.

Kent Stainless 3 Part Floor Drains are ex-stock in Ireland and offer excellent value for money. Due to their lightweight construction they can be air freighted with an 8-10 day delivery period.

Features

- Grade 316 Stainless steel
- 102mm diameter outlet
- Satin finish as standard; mirror polish also available
- Ex stock; spare parts also ex stock



Product Code	Height	Width	Depth	Outlet	Flow Rate*
KFD 150/102	15mm	150mm	150mm	102mm	1.4 l/s
KFD 200/102	15mm	200mm	200mm	102mm	1.4 l/s

Specify Kent Floor Drain KFD150/102. 150 x 150mm, 3 part floor drain. Grade 316 stainless steel with a satin polish finish.



BS EN1253 Class K3