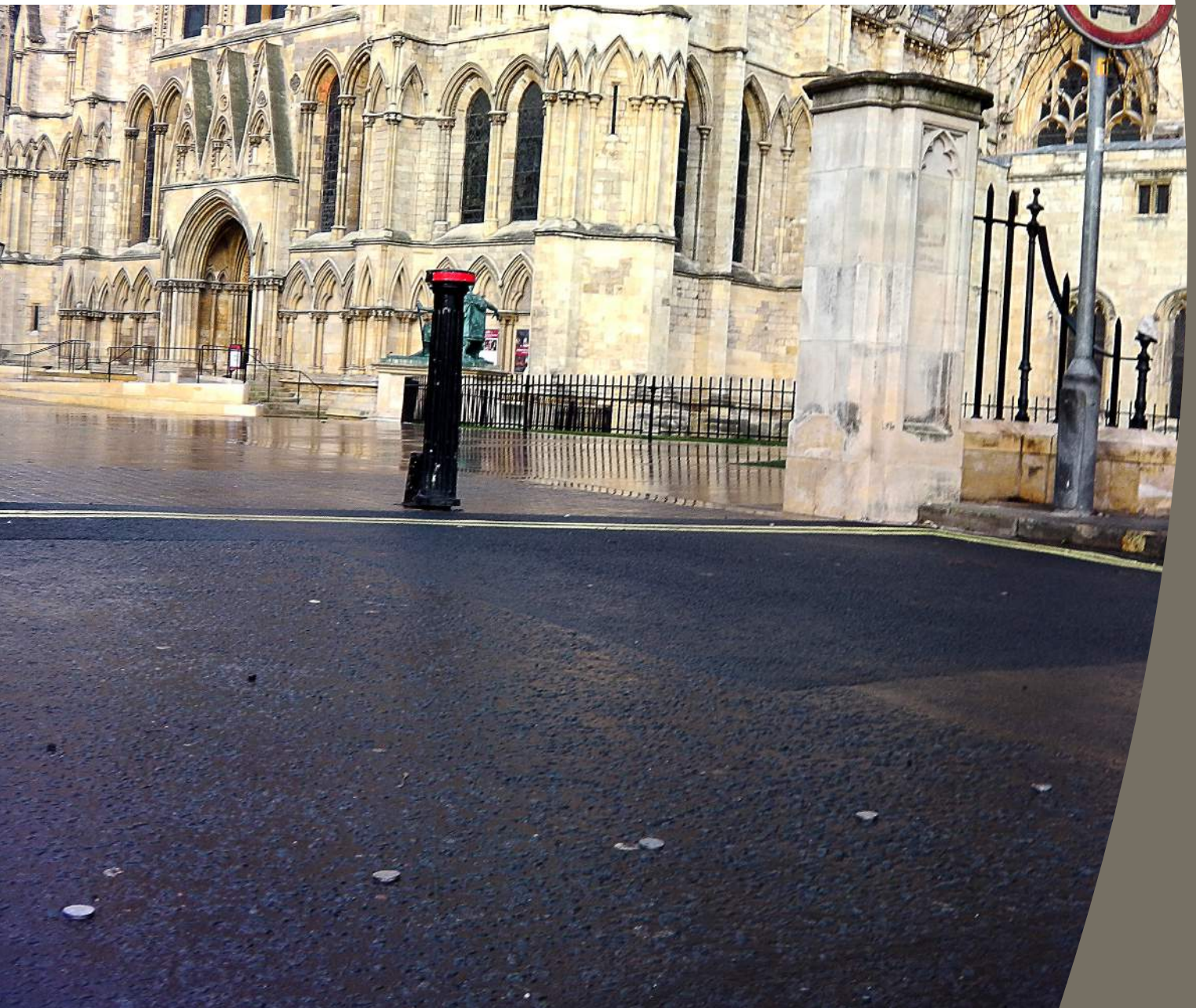


DEMARCATI STUD



Kent Demarcation Stud KDS25

Specify:

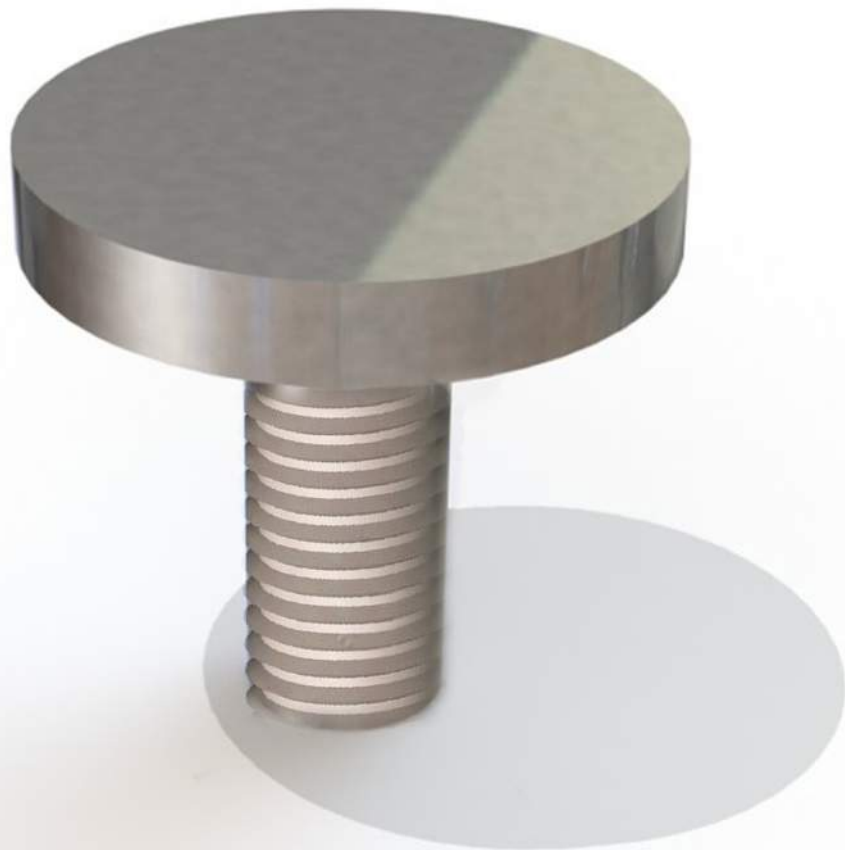
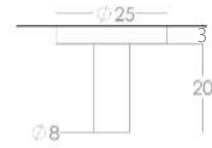
Kent Demarcation Studs KDS25; Grade 316L Stainless Steel; Cold Rolled Electropolished.

The Kent Demarcation Studs are used to delineate walkways and site boundaries. The discs finish flush to the finished paving surface and as shown below they can be customised using logos, or signage etc. by laser etching.

The stainless steel material is ideal for high-traffic pedestrian areas.

Features

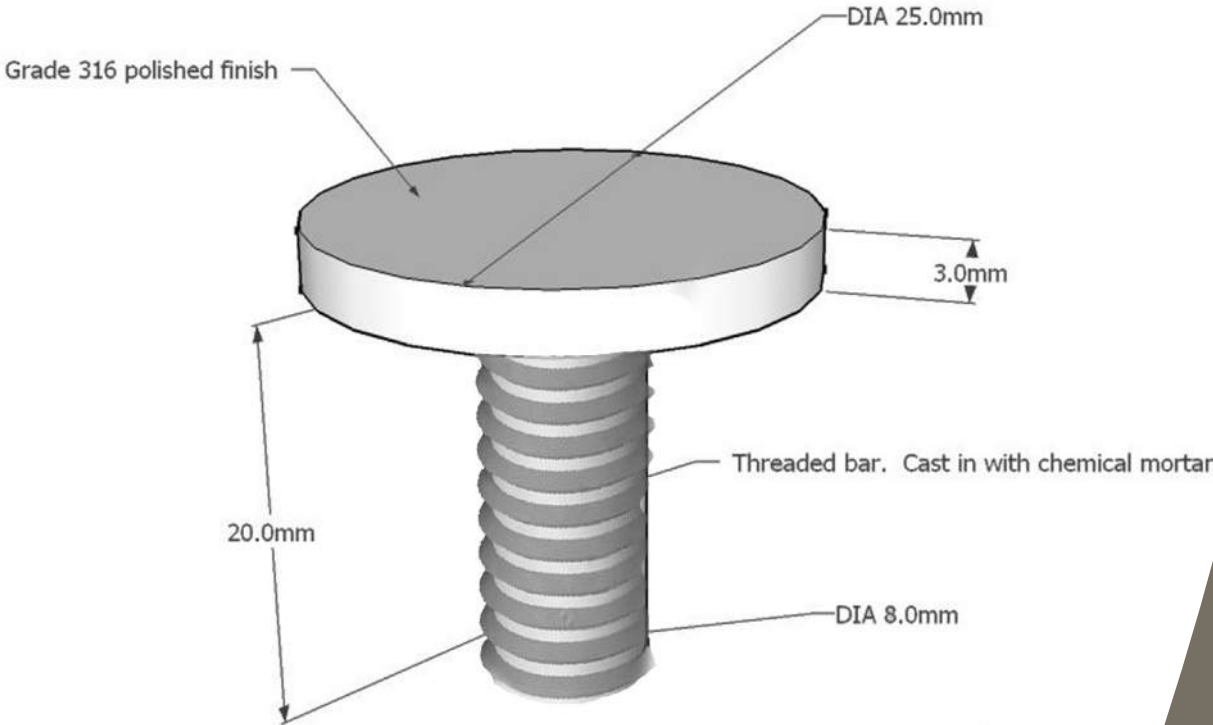
- Electropolished finish
- Optional laser etching
- Grade 316L Stainless Steel
- Used to delineate walkways and site boundaries





Product Dimentions:

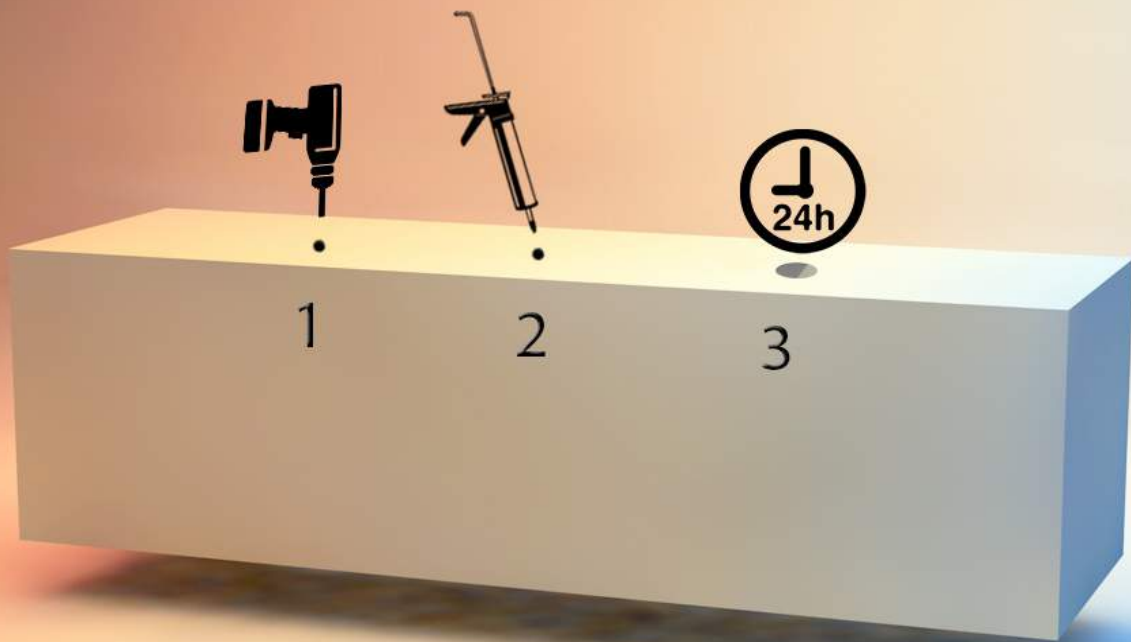
Reference	Height	Diameter
Kent Demarcation Stud KDS25	3mm	25mm



Kent Demarcation Stud KDS25

Installation:

1. Drill an outer hole 27mm diameter + 3mm deep. Inside this outer hole drill an inner hole "centrally" 10mm diameter x 30mm deep.
2. Fill with chemical mortar (Kent Stainless recommend Mungo MIT-SE Plus)
3. Insert the anti skate board stud and leave to set for 24 hours.



Product Options:

Specify:
Kent Demarcation Studs KDS25; Grade 316L Stainless
Steel; Cold Rolled Electropolished.

Cold Rolled Electro Polished
Satin Finish 320 grit
Shot Peened
Bright Peened

Grade
316L
304L
303



Overview

The Kent Demarcation Studs are used to delineate walkways and site boundaries. The discs finish flush to the finished paving surface and as shown below they can be customised using logos, or signage etc. by laser etching.

Maintenance

Stainless Steel:

Clean the stainless steel components using warm water with a mild detergent with a non-abrasive cloth or sponge. Heavier stains may require the use of a nylon-scouring pad or a stainless steel cleaner. To remove paint or graffiti use a cloth and Alkaline or solvent paint strippers according to type of paint. In the case of a bead blasted finish, where abrasive cleaning is required, always use a random circular rubbing action with a cloth. In the case of brushed finishes the surface consists of uniform fine 'scratches' running in one direction so where abrasive cleaning is required always use a straight back and forward rubbing action in the direction of the grain using soap and warm water. Rust spots or 'tea stains' can occur on the surface of the material, these are normally caused by contamination from ordinary mild steel, particularly in areas where construction work has been undertaken. Such stains can be removed using Rust Remover 410. In cases where the surface is severely stained because of severe environmental conditions or scratched due to misuse, it may still be possible to restore the original finish using chemicals such as Oxalic Acid solution. There are many stainless steel polishes available to enhance the surface finish. We recommend Mister Stainless Ltd. as a provider for stainless steel cleaning products.

The stainless steel material is ideal for high-traffic pedestrian areas.





**Kent Tactile Warning
Stud KTWS/25/5/FDG**

